

# TRACE

Transcultural Styles + Ideas

## The Art Issue



US \$5.99 CAN \$7.99 UK £3.95 FR €5.50  
PHOTOGRAPHY MARILYN MINTER

text **CARMEN ZITA** + portrait photography **ROBERTO FIMMANO**

# MARILYN MINTER

*...more interesting beauty...*

Marilyn Minter's suave and sexy paintings have been featured recently in the Whitney Biennial, San Francisco MOMA, and Jeanne Greenberg Rohatyn's Salon 94 gallery in New York. Her photographs have seen in the editorial pages of New York magazine; her glamorous shots of women's feet in bejeweled, rain-and-mud-splashed high heels have been enlarged to fill billboards and installed in spots around Chelsea, with the sponsorship of public art group Creative Time.

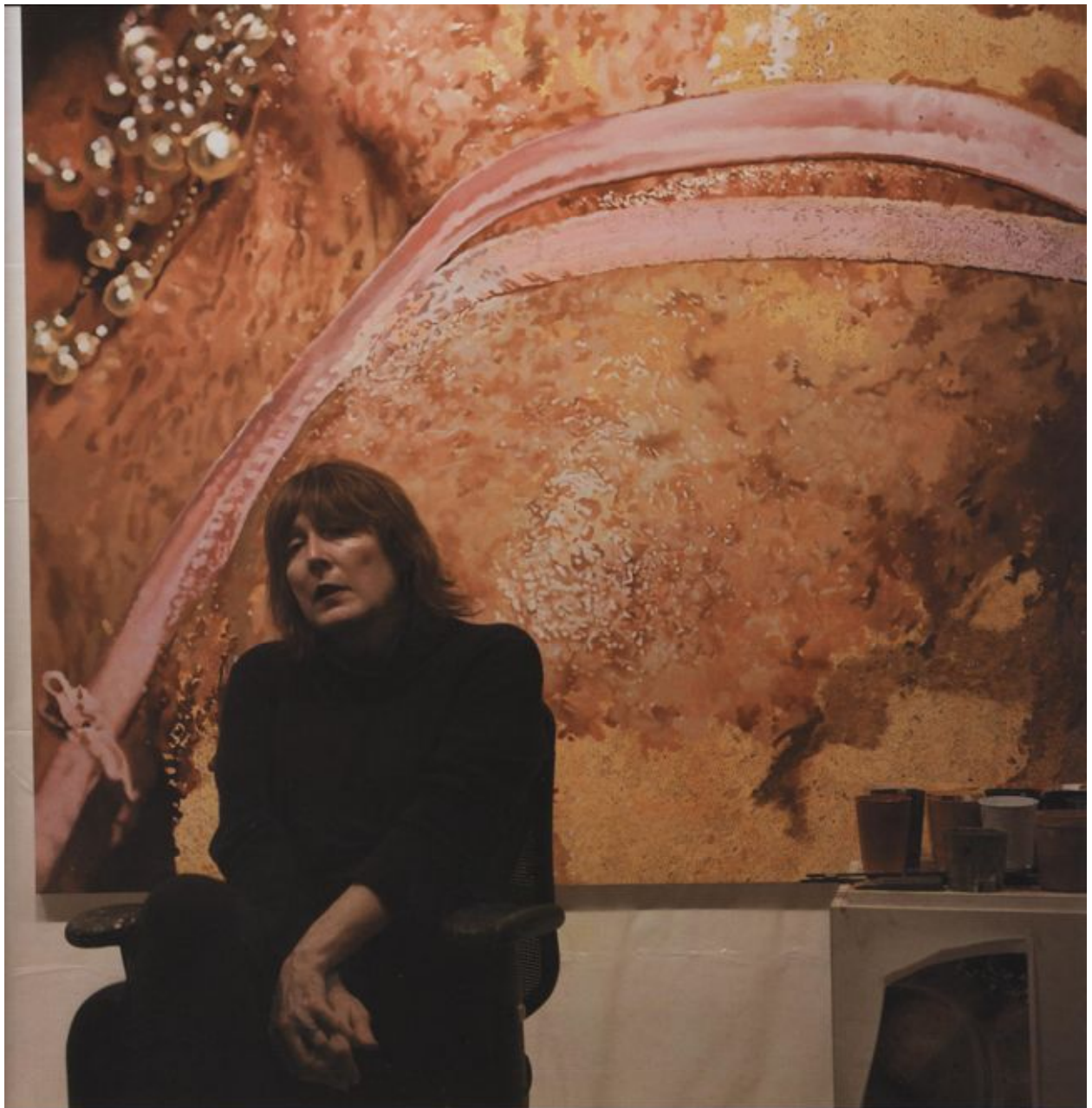
Minter, a painter, says her process involves taking photographs and then making paintings from the images, though she remains open to commercial photography projects. "I don't consider myself a real photographer," she says, "but I'll do anything if I can get some art out of it." Her models include blue-eyed Africans, Eurasians (like model Devon Aoki), and mixed-race Americans. ("They are simply more interestingly beautiful than others.") Minter paints with enamel on aluminum, using her fingers to apply the paint, a technique she has perfected over the last fifteen years. Up close to her paintings—which otherwise dazzle with what might be called super-photo-surrealism— one can see her fingerprints (and those of her assistants) on the surface.

Among those who have commissioned paintings from the artist recently are Pamela Anderson and model Stephanie Seymour. In 2007 Minter will be featured in the prestigious journal Parkett, and in the first monograph on her work, to be released this month by Gregory Miller Publishers.

Marilyn Minter All images courtesy of the artist and Salon 94, NY.









Black Cherry (2002): C-print, 36x50 in.



Clip (2005): Enamel on metal, 30x24 in.



Sock (2005): Enamel on metal, 30x24 in.

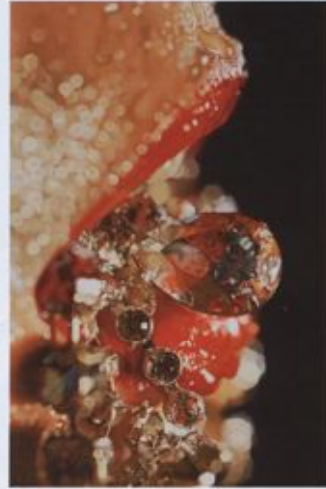




Goldfingers (2002): Enamel on metal, 30x24 in.



LAtoNY (2003): Enamel on metal, 72x48 in.



Rock Candy (2005): Enamel on metal, 72x48 in.



Glazed (2006): Enamel on metal, 96x60 in.



Strut (2005): Enamel on metal, 96x60 in.





Splish Splash and Runs: installations view, (23rd Street)  
New York, 10th and 11th



Shitkicker: (23rd Street) 10th Ave on the High-line.

Mudbath: (17th Street) 10th Ave. over Park Restaurant.

